



**16 Mafeking Road,  
Tottenham**

**£530,000 Freehold**



# 16 Mafeking Road, Tottenham

473 High Street, Tottenham, London,  
N17 6QA

020 8801 2696  
[www.kings-group.net](http://www.kings-group.net)

- Three Bedroom House
- 1930s Period Property
- Two Reception Rooms
- Open Plan Dining Room/Kitchen
- First Floor Bathroom
- Tenants In Situ
- Double Bedroom
- Excellent Location
- Minutes Away From Tottenham Hale Station
- EPC Rating : D

Tottenham Retail Park is close by, offering a variety of shops, restaurants, and everyday conveniences. The area is also undergoing significant regeneration, including upgrades to the station and nearby stadium.

Council Tax Band C

Flood Risk - Rivers & Seas: Very Low, Surface Water: Low

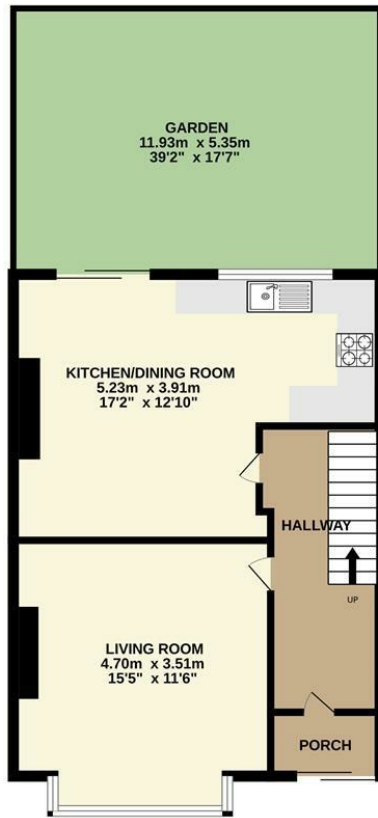
The property is being sold with tenants in situ, making it an ideal turnkey investment for buyers seeking immediate rental income

Kings Group are delighted to present this well-maintained three-bedroom 1930s period home, ideally located just a short walk from Tottenham Hale Station..

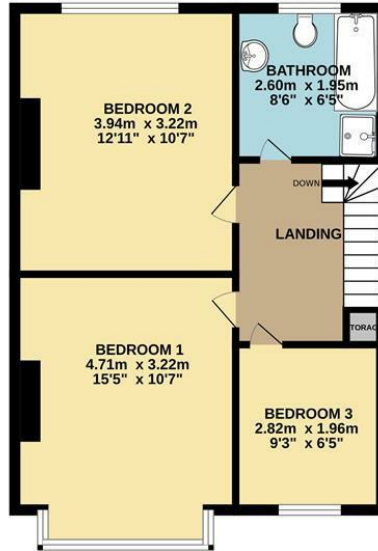
This charming property offers a spacious and naturally bright reception room, an open-plan dining area with a fully fitted kitchen, and a private rear garden—perfect for relaxing or entertaining. Upstairs, the first floor comprises two generously sized double bedrooms, a third single bedroom, and a three-piece family bathroom suite. With its well-kept interiors and thoughtful layout, this home presents an excellent opportunity for investors.

Perfectly positioned for commuters, the home is just a short walk from Tottenham Hale's train and bus stations. Residents benefit from direct and speedy connections to Stratford and Liverpool Street via the Overground, as well as Stansted Airport (via the Stansted Express) and Central London on the Victoria Line—all reachable within minutes.

GROUND FLOOR



1ST FLOOR



TOTAL FLOOR AREA: 83.0 sq.m. (893 sq.ft.) approx.  
 Whilst every attempt has been made to ensure the accuracy of the floorplan contained here, measurements of doors, windows, rooms and any other items are approximate and no responsibility is taken for any error, omission or mis-statement. This plan is for illustrative purposes only and should be used as such by any prospective purchaser. The services, systems and appliances shown have not been tested and no guarantee as to their operability or efficiency can be given.  
 Made with Metropix ©2025



THE PROPERTY MISDESCRIPTIONS ACT 1991. The agent has not tested any apparatus, equipment, fixtures or services and so cannot verify that they are in working order, or fit for the purpose. References to the Tenure of a property are based on information supplied by the vendor. The agent has not had sight of the Title documents. A buyer is advised to obtain verification from their Solicitor or Surveyor



473 High Street, Tottenham, London,  
N17 6QA

020 8801 2696

[www.kings-group.net](http://www.kings-group.net)



[Zoopla.co.uk](http://Zoopla.co.uk)



[rightmove.co.uk](http://rightmove.co.uk)  
The UK's number one property website

